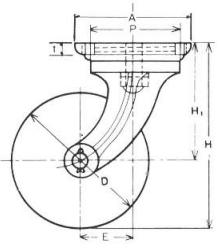


重荷重用自在車・固定車

重荷重用自在車(HB-G型)

ゴム車輪

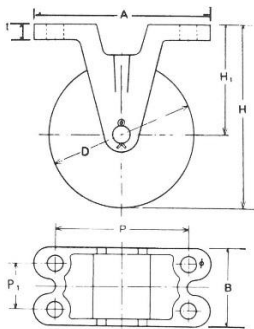
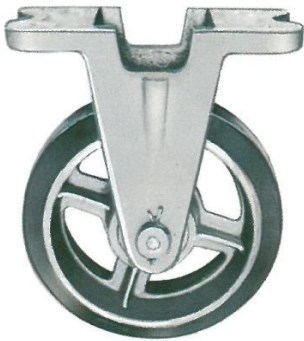


(単位:mm)

コードNo.	品名	許容荷重 (kg)	車輪外径 D	金具高さ H1	取付高 H	取付座厚さ t	取付寸法 AXB	取付ピッチ PXP1	取付穴径 φ	偏芯 E	金具+車輪 (kg)
0342-281	HB-g100X50	150	100	90	140	8.5	115	85x85	11	35	3.2
0342-282	HB-g100x65	195	100	90	140	9.5	130	100x100	11	35	4.5
0342-283	HB-g130x50	200	130	115	178	8.5	122	95x95	11	40	3.7
0342-284	HB-g130x65	250	130	115	178	9.5	130	100x100	11	35	5.1
0342-285	HB-g150x50	225	150	135	210	9.5	126	100x100	13	40	4.9
0342-286	HB-g150x65	270	150	135	210	9.5	130	100x100	11	40	6.0
0342-287	HB-g150x75	345	150	135	210	11.5	142	110x110	13	45	6.9
0342-288	HB-g150x100	520	150	150	225	17.0	165	115x115	13	60	12.9
0342-289	HB-g180x50	270	180	140	230	9.0	137	105x105	13	45	5.7
0342-290	HB-g180x65	325	180	145	235	13.0	147	110x110	13	45	7.9
0342-291	HB-g180x75	350	180	145	235	14.5	168	130x130	13	50	10.5
0342-292	HB-g200x50	300	200	155	255	10.0	145	112x112	13	50	6.5
0342-293	HB-g200x65	385	200	155	255	11.0	142	110x110	13	50	8.1
0342-294	HB-g200x75	450	200	155	255	11.5	160	125x125	15	50	9.2
0342-295	HB-g200x90	535	200	155	255	11.5	160	125x125	15	80	11.5
0342-296	HB-g230x65	445	230	190	305	12.0	175	136x136	14	70	10.8
0342-297	HB-g230x90	615	230	190	305	14.0	200	155x155	14	55	12.0
0342-298	HB-g250x65	480	250	190	315	12.0	175	136x136	14	80	11.3
0342-299	HB-g250x75	570	250	190	315	12.0	175	136x136	14	70	13.4
0342-300	HB-g250x90	670	250	190	315	14.0	20	155x155	15	70	17.3
0342-305	HB-g250x100	700	250	205	330	16.0	205	167x167	16	90	22.8
0342-301	HB-g300x65	580	300	225	375	14.0	195	155x155	15	70	15.8
0342-302	HB-g300x75	685	300	225	375	14.0	195	155x155	15	70	16.6
0342-303	HB-g300x90	805	300	225	375	14.0	195	155x155	15	70	19.5
0342-304	HB-g300x100	900	30	205	355	16.0	205	167x167	16	90	24.8
0342-306	HB-g410x100	1000	410	292	497	16.0	300	260x260	16	100	
0342-307	HB-g500x130	1500	500	350	600	19.0	370	310x310	22	120	
0342-308	HB-g500x150	1800	500	350	600	19.0	370	310x310	22	120	

重荷重用自在車(HB-K型)

ゴム車輪



(単位:mm)

コードNo.	品名	許容荷重 (kg)	車輪外径 D	金具高さ H1	取付高 H	取付座厚さ t	取付寸法 AXB	取付ピッチ PXP1	取付穴径 φ	金具+車輪 (kg)
0342-311	HB-k100X50	150	100	90	140	9.5	115	113x76	11	2.2
0342-312	HB-k100x65	195	100	90	140	9.5	130	118x91	11	2.8
0342-313	HB-k130x50	200	130	115	178	12.0	122	155x75	11	2.9
0342-314	HB-k130x65	250	130	115	178	9.5	130	133x93	11	4.6
0342-315	HB-k150x50	225	150	135	210	12.0	126	183x75	15	4.0
0342-316	HB-k150x65	270	150	135	210	11.5	130	153x93	13	5.5
0342-317	HB-k150x75	345	150	135	210	11.5	142	166x106	13	6.3
0342-318	HB-k150x100	520	150	150	225	17.5	165	177x145	15	10.5
0342-319	HB-k180x50	270	180	140	230	12.0	137	205x82	14	4.8
0342-320	HB-k180x65	325	180	145	235	16.5	147	180x100	13	7.3
0342-321	HB-k180x75	350	180	145	235	18.5	168	203x177	13	8.5
0342-322	HB-k200x50	300	200	155	255	13.0	145	208x85	13	5.5
0342-323	HB-k200x65	385	200	155	255	11.5	142	195x95	13	7.0
0342-324	HB-k200x75	450	200	155	255	12.0	160	192x106	13	7.9
0342-325	HB-k200x90	535	200	155	255	12.0	160	195x120	15	10.3
0342-326	HB-k230x65	445	230	190	305	12.0	175	196x103	13	8.8
0342-327	HB-k230x90	615	230	190	305	12.0	200	217x128	15	10.5
0342-328	HB-k250x65	480	250	190	315	12.0	175	196x103	15	9.3
0342-329	HB-k250x75	570	250	190	315	12.0	175	196x116	15	11.9
0342-330	HB-k250x90	670	250	190	315	12.0	20	217x128	15	14.3
0342-335	HB-k250x100	700	250	205	330	14.0	205	220x115	18	16.8
0342-331	HB-k300x65	580	300	225	375	12.5	195	210x107	15	12.3
0342-332	HB-k300x75	685	300	225	375	12.5	195	210x107	15	13.1
0342-333	HB-k300x90	805	300	225	375	12.5	195	215x125	15	16.2
0342-334	HB-k300x100	900	30	205	355	14.0	205	220x155	18	18.8
0342-336	HB-k410x100	1000	410	292	497	16.0	300	280x250	16	
0342-337	HB-k500x130	1500	500	350	600	19.0	370	320x270	22	
0342-338	HB-k500x150	1800	500	350	600	19.0	370	320x270	22	